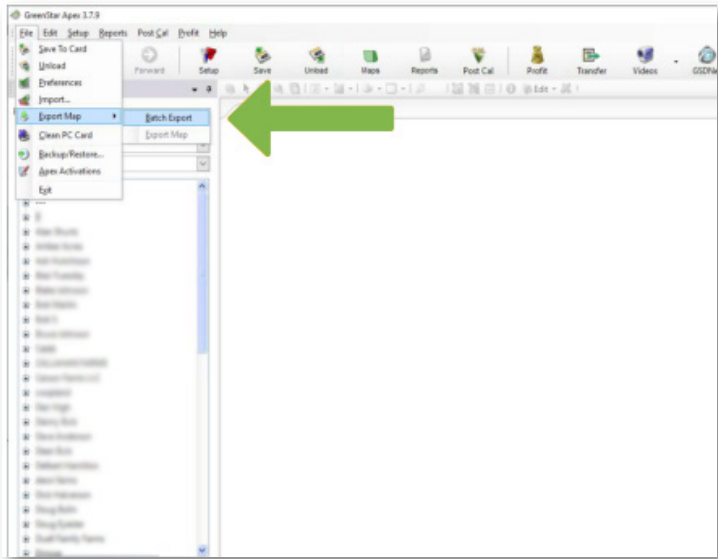
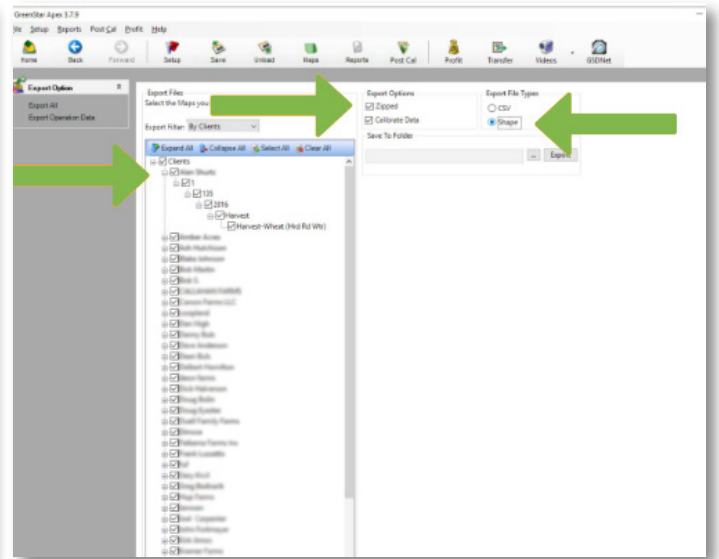


EXPORTING DATA FROM JOHN DEERE APEX TO YOUR COMPUTER – Batch Exporting John Deere Shapefiles

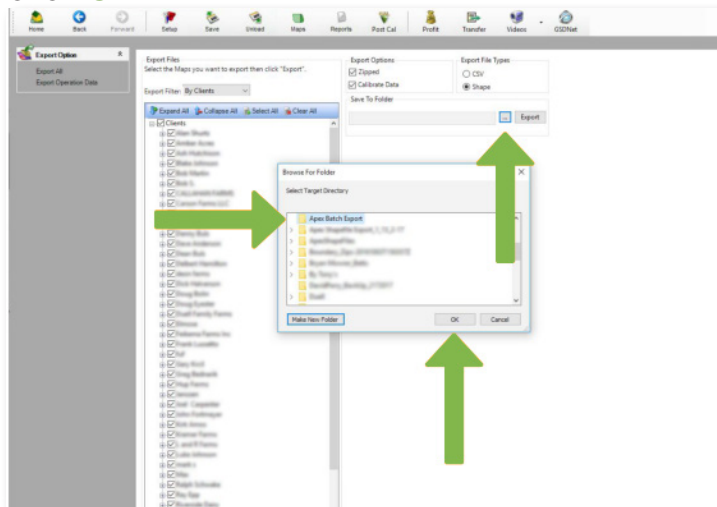
Step 1: Open APEX and select *File*, then select *Export Map* and *Batch Export*



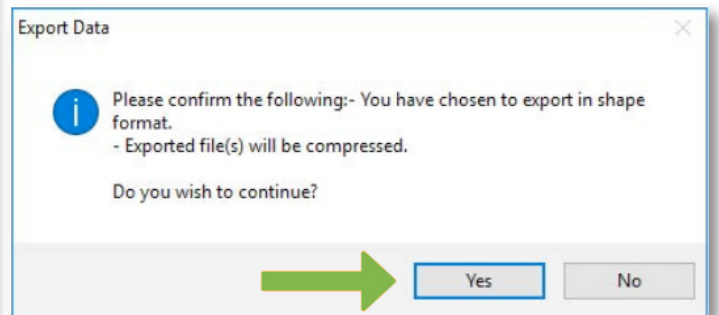
Step 2: Select the data you wish to export or select all, then select *Zipped* and *Shape*



Step 3: Select the browse button and choose or create a destination folder. Then click *OK*.



Step 4: Confirm the export by clicking *Yes*. Your export will now begin.



Your files will begin exporting to the selected destination folder.



Questions? 800.260.8366 • www.truacre.com • CRS System Support 877.551.0410

Our services provide estimates or recommendations based on models. TruAcre Technology does not guarantee or warranty results. Consult your agronomist, commodities broker or other service professionals before making financial, risk management or farming decisions. Information and recommendations we provide do not modify your rights under insurance policies purchased through our affiliates. The following trademarks are used with permission: Climate FieldView® is a registered trademark of Precision Planting, LLC; GreenStar®, CommandCenter®, SeedStar®, StarFire® and SprayStar® are registered trademarks of Deere & Company Corporation; iPad® is a registered trademark of IP Application Development, LLC.; and AgFiniti is a registered trademark of Ag Leader Technology, Inc.; ©2020 TruAcre Technology. All Rights Reserved.