

# EXPORTING DATA FROM AG LEADER SMS SOFTWARE

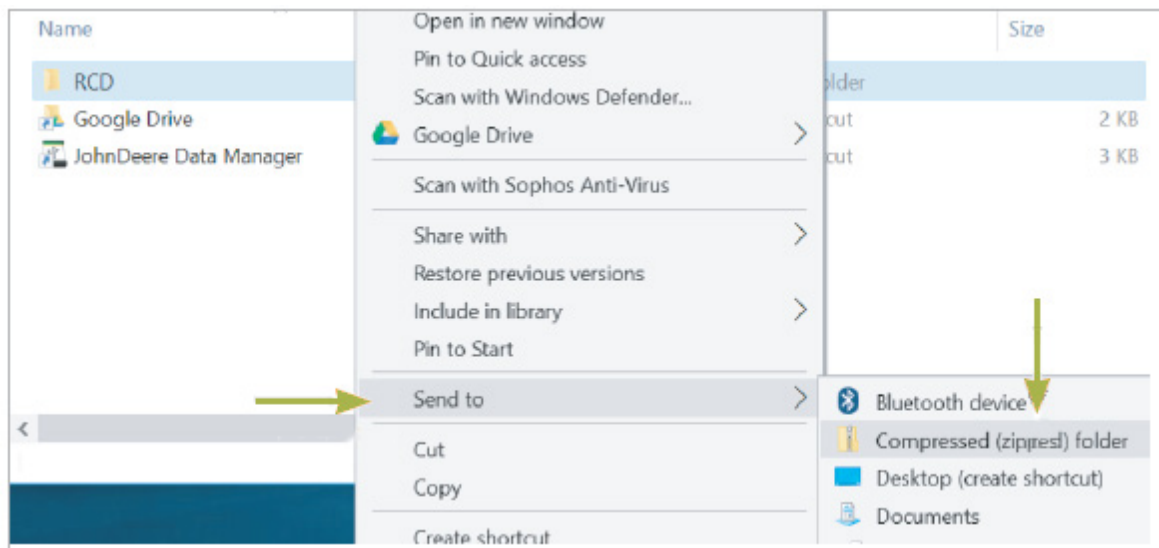
Step 1: Export data from SMS onto your computer.

- Open the SMS project you wish to export
- Go to Tools, then select File Viewer
- Select the file that contains the year and data you wish to export
- Select Save File(s) to
- Select Desktop, then click OK

*Your files have now been exported from SMS onto your computer  
(file name will be the same as the original raw file uploaded)*

Step 2: Zip Your Files

- Go to your desktop
- Right click on the file you just exported, select Send To, then *Compressed (zipped) folder*



**Questions?** 800.260.8366 • [www.truacre.com](http://www.truacre.com) • CRS System Support 877.551.0410

Our services provide estimates or recommendations based on models. TruAcre Technology does not guarantee or warranty results. Consult your agronomist, commodities broker or other service professionals before making financial, risk management or farming decisions. Information and recommendations we provide do not modify your rights under insurance policies purchased through our affiliates. The following trademarks are used with permission: Climate FieldView® is a registered trademark of Precision Planting, LLC; GreenStar®, CommandCenter®, SeedStar®, StarFire® and SprayStar® are registered trademarks of Deere & Company Corporation; iPad® is a registered trademark of IP Application Development, LLC.; and AgFiniti is a registered trademark of Ag Leader Technology, Inc.; ©2020 TruAcre Technology. All Rights Reserved.